



Mammoth, Inc.
101 West 82nd Street
Chaska, MN 55318-9663
USA

Office: 952.361.2711
Fax: 952.361.2700

www.mammoth-inc.com
info@mammoth-inc.com

NEWS RELEASE

For more information, please contact:
info@mammoth-inc.com

Mammoth® Supplies 7 World Trade Center

Chaska, MN (October 18, 2004) — The last building to fall and the first building to rise following September 11, 2003. Mammoth is proud to serve this high-rise office building with 92 V-Cube™ packaged self-contained air conditioners. Each unit averaged nearly 70-tons in size and included many innovative and energy-savings designs such as waterside economizer coil, variable frequency drives, DDC controls, sound attenuation, high-efficiency filters, non-ozone depleting refrigerant

Floor-space is precious and commands a premium in this office building so the less space you utilize for HVAC equipment, the better. Packaged self-contained air conditioners are known for their compactness and low sound levels. They also provide building owners the benefit of giving tenants control over their air conditioning system.



Dave Milligan, manager of Engineered Products, commented, “The customer was concerned about the sound level in the occupied space. It was easy for us to demonstrate the sound performance of our product as we have an AMCA 300 accredited sound-testing laboratory. The customer also performed a job site sound test and found sound levels less than NC 35 in the occupied space.

Learn more about Mammoth floor-by-floor, packed self-contained solutions by contacting a Mammoth professional sales representative. To find the nearest sales representative, visit www.mammoth-inc.com.

Mammoth is a CES Group™ company. The companies that comprise CES Group™ are some of the world’s leading custom-engineered air conditioning manufacturers, offering a full range of products, from 1/2 to 2,000+ tons and 300 to 400,000+ cfm. The CES Group can provide innovative, cost-effective, custom-engineered solutions for today’s most challenging HVAC applications.

Facts & Figures

Owner/Developer: Silverstein Properties Inc., New York, NY
Landowner: Port Authority of New York and New Jersey
Type of Project: A replacement office building
Architect: Skidmore, Owings & Merrill LLP, New York, NY
Construction Manager: Tishman Construction Corp., New York, NY
Size: 1.7 million square feet
Cost: \$700 million
Construction Time: May 2002 - May 2006
The Need: To replace the original 7 World Trade Center
The Challenge: Coordinating the project with simultaneous disaster recovery work and other construction projects at the site

Supportive Team Members

AKRF, Inc.
Environmental, Planning & Engineering Consultants

Champion Metal & Glass, Inc.
Glass & Glazing

Donaldson Acoustics Co., Inc.
Drywall & Acoustics Subcontractor

Eagle One Roofing Contractors Inc.
Roofing & Sheet Metal

GMA Electrical Corporation
Electrical Contractors, Fire Alarm Systems, Telecommunications

Henry Bros. Electronics, Inc.
Physical Electronic Security Systems

Johnson Screens, Inc.
Stainless Steel

MBI Group
General Contractor & Construction Management

Pyramid Floor Covering Inc.
Flooring Contractor

Thomas J. Donnelly, Inc.
Insulation & Firestopping

WSP Cantor Seinuk
Structural Engineers

Wheeling Corrugating Company
Steel Deck Contractor



New York, New York

7 World Trade Center

During the terrorist attacks on September 11, 2001, 7 World Trade Center was the last building to fall at Ground Zero. It is now the first tower to be rebuilt on the site. Construction began in May 2002 and was completed in May 2006.

"7 World Trade Center offers first-class companies a chance to relocate to the finest new building in New York, improve the quality and efficiency of their work environments, and contribute to the revitalization of downtown," said Larry Silverstein, developer for Silverstein Properties Inc., the project's owner/developer. It sits on land owned by the Port Authority of New York and New Jersey.

Located just steps from New York's financial district, the new, 1.7 million-square-foot tower

offers unparalleled access to the city's and region's entire transit network; features the highest standards of excellence in design, life safety and technology; and heralds the spirit of redevelopment and renewal in lower Manhattan. Boasting 52 stories, the tower contains 42 tenant floors that have an average of 40,000 square feet of virtually column-free rentable space. Tenant floors begin at the 11th floor — 125 feet above grade. The first 10 floors are dedicated to building services and a Consolidated Edison substation that supplies electrical service to lower Manhattan.

"Our building had to be classic — to set the tone for buildings to come at the site," said Ken Lewis, project manager for Skidmore, Owings & Merrill LLP

(SOM), the project's architect. "And, of course, this site is highly symbolic and emotionally charged, and our design team was always very aware of this added layer of meaning."

The project is a pioneer in terms of environmental responsibility, energy efficiency and quality of life, and has already won an award from the Environmental Protection Agency (EPA). "Not only will 7 World Trade Center be the first LEED™ - [Leadership in Energy & Environmental Design] certified high-rise office building in New York City, we believe it will set a new standard of commercial building design and construction across the country," said David Childs, consulting design partner at SOM. The project has earned gold LEED™ certification.

Green design features include more open space, including a park; improved indoor air quality due to outside-air ventilation treated with high-efficiency filtration; energy conservation as a result of technologies such as steam-to-electricity turbine generators and variable speed fans; water conservation due to reuse of rainwater for building



Photo courtesy of Tishman Construction Corp.



Photo courtesy of David Sundberg, Esto



Photo courtesy of Joe Woolhead

cooling and park irrigation; and better interior light due to state-of-the-art, ultra-clear glass technology that also conserves energy.

“The tower skin is comprised of floor-to-ceiling, crystal-clear glass,” said James Carpenter, glass artist and MacArthur Fellow who helped design the building’s surface. “It is animated with light, which evolves naturally by day with the changing exterior conditions and artificially by night with programmed LED [Light Emitting Diode] projection sequences.”

Silverstein Properties and Tishman Construction Corp., the



Photo courtesy of David Sundberg, Esto

project’s construction manager, built the original 7 World Trade Center in the 1980s. According to Mel Ruffini, senior vice president and project executive for Tishman, the project’s greatest challenge was coordinating the site’s logistics while disaster recovery work and other construction projects were taking place simultaneously. “Our key to



Photo courtesy of Joe Woolhead

project success was maintaining open lines of communication among all the groups involved through daily meetings,” he said.

Tishman took a unique approach to save time on the project. “We devised and implemented a system by which the tower’s steel

frame was erected ahead of its concrete core,” said Ruffini. “This method allowed for the project to be topped out one month ahead of schedule and completed on time and on budget.” ■

— Dave Hornstein

GENERAL CONTRACTING □ CONSTRUCTION MANAGEMENT
INTERIORS □ MISSION CRITICAL □ CORE & SHELL



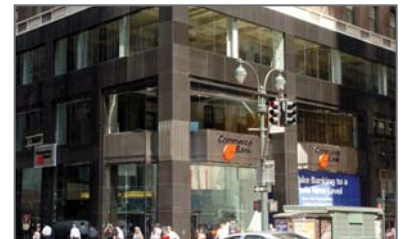
MBI Group represents a new generation of construction professionals. Founded in 1987, we are committed to creating innovative and cost-effective solutions to your specific construction challenges. MBI Group brings invaluable strategies to every project, blending our professional resources with the latest technologies to assist our clients and their design professionals in building unique and award-winning installations.

MBI Group congratulates Silverstein Properties & Tishman Construction on the new 7 World Trade Center building

MBI was proud to participate in this exciting project



General Contracting • Construction Management



48 West 37th Street, NY, NY 10018 □ TEL 212 376 4400 □ www.mbinny.com